

## Panel and steel bar penning

### Gilt, sow and boar pens

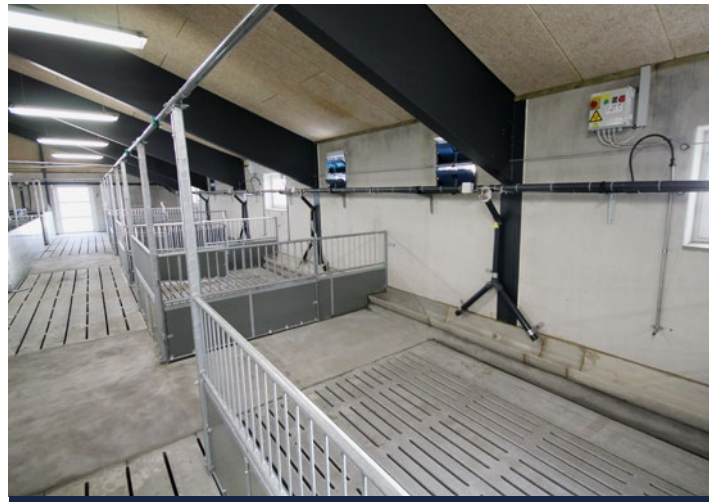
Vissing Agro offers the market's most robust solutions for sows, gilts and boars. The penning is designed to provide maximum stability and durability. The equipment might be designed in several different ways either as a panel/steel bar solution or in a strong 50 mm PP panel or as a combination of these. It is also possible to incorporate different types of open grids made of stainless steel or galvanized steel. Furthermore, the many combination options make it possible to adapt the penning to the slope of the floor, whether it is new or existing.

Penning made of a combination of panel and steel bars is 100 or 110 cm high. The panel is a 12 mm solid plastic sheet in the bottom enforced by a steel frame and provided with vertical steel bars at the top. The panel is attached to floor with heavy duty steel posts. The panel might also be provided with 210 cm high steel post connected to a 1" galvanized pipe. This solution is used where increased stability is required such as in pens for boars. Steel grids allowing pigs contact with other pigs in neighbor pens might be provided for this solution.

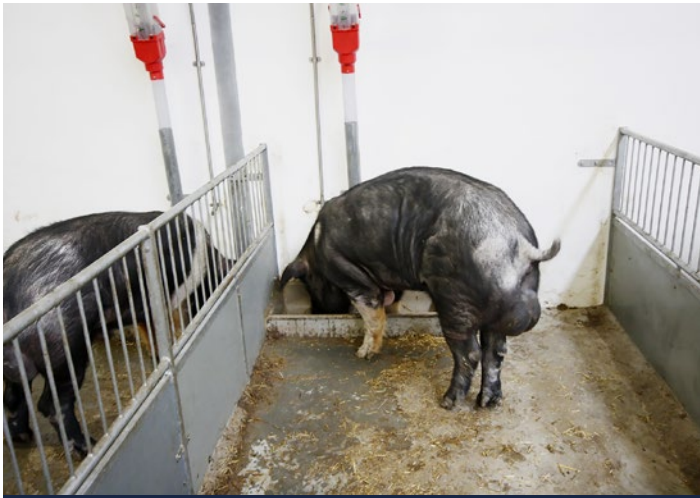
**We call ourselves  
pig experts and  
we stand by that**



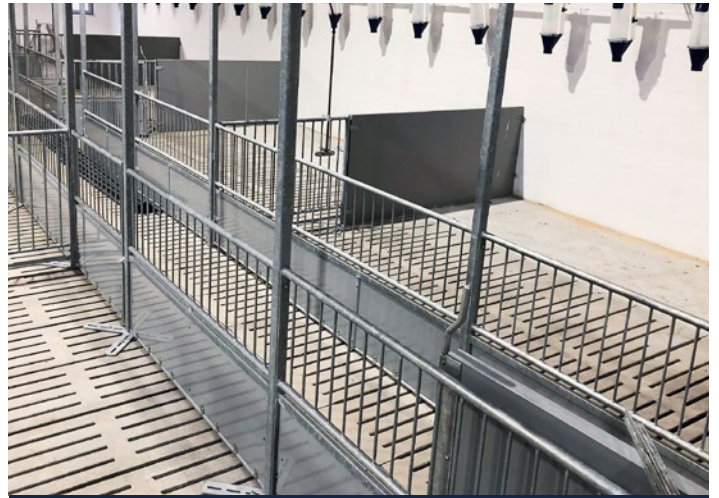
Gilt pen with restricted dry feeding



Gilt pen with liquid feeding and high posts



Boar pen



Gilt pen with floor feeding and high posts

## Facts

- Pen height: 100/110 cm
- Panel/steel bar penning
  - 12 mm panel thickness
  - Hot dip galvanized frame and solid rods
- Heavy duty posts, supports and brackets
- Custom-made width of gate
- Stainless steel fixture
- Water supply via water cup or nipple

## Vissing Agro A/S

Energivej 5, DK-8740 Brødstrup  
[www.vissingagro.dk](http://www.vissingagro.dk)



download  
our  
brochures

